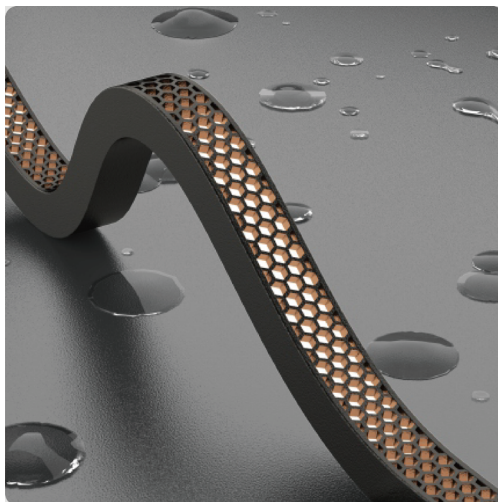




Silicone neon strip

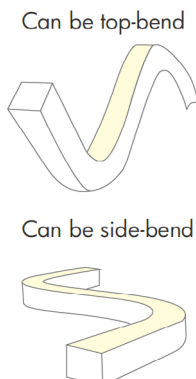
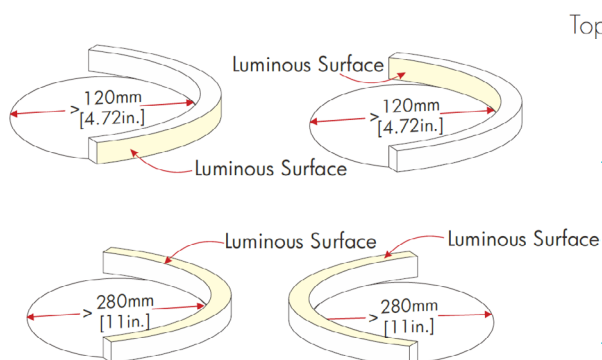
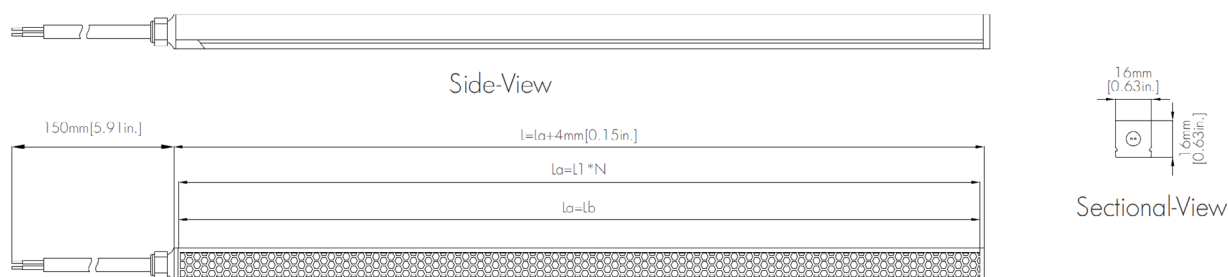
**VIVA Silicone HEX
3D**

Product specification



- Dual-bend is available to fix many plane, curved, and complex irregular structures at will.
- Noble and elegant appearance with anti-glare UGR<19 design.
- On-site processable to be any length with the free-cutting feature.
- Uniform, dot-free, and smooth lighting performance up to 5M[16.4ft.].
- Dimmable available with PWM signal.
- Environmentally friendly, high-grade appearance, soft bend flexibility, strong impact resistance, and high weather resistance using food-grade silicone material.
- IP67 and IK06 for both indoor and outdoor usage
- 50,000h LED lifespan, 5 years warranty, CE & UL approval.

Dimensions Structure



Electrical Parameters

Voltage	LED PIN Temperature	Storage Temperature	Ambient Temperature	RA
DC24V	Max. 65°C / 149°F	-25°C ~ 60°C -13°F ~ 140°F	Min. -20°C / -4°F Max(Table below)	≥90

Specifications

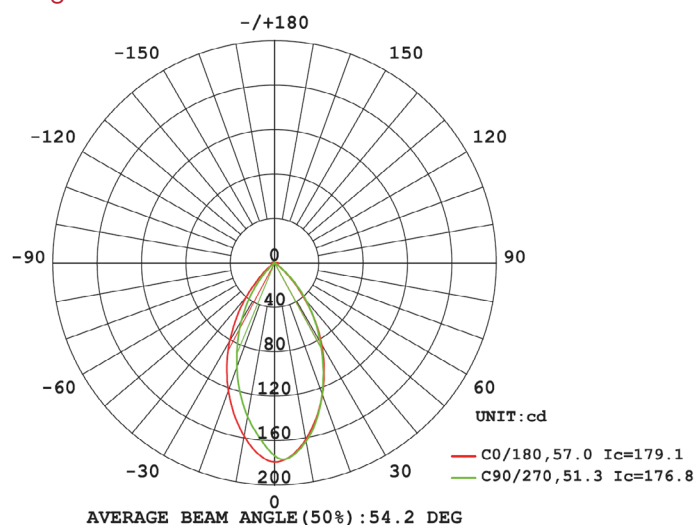
Power(w/m - w/ft)	Efficacy(lm/w)@4000K	Max Ambient Temperature
14 w/m - 4.267 w/ft	10lm/w	45°C / 113°F

Due to the tolerance of the production and electrical components, output value and electrical power can vary up to 10%

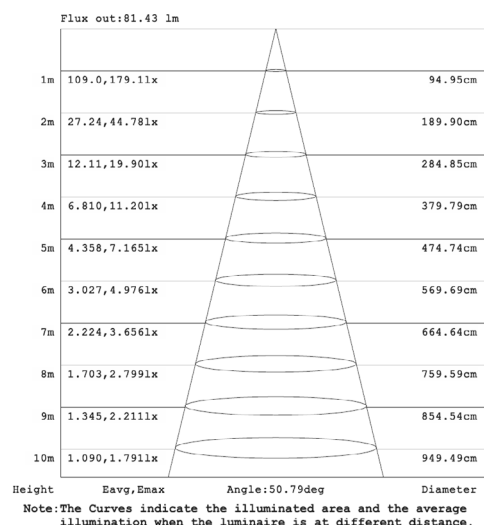
Length Standard

Length Range (M / ft)	Integrated end cap	Tolerance
0M< Strip(L) ≤ 5M / 16.4ft	L+6mm / L + 0.236"	± 7mm / ± 0.275"
5M< Strip(L) ≤ 10M / 32.8ft	L+6mm / L + 0.236"	± 10mm / ± 0.393"

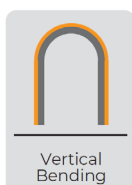
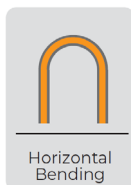
Light Distribution Curve



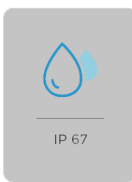
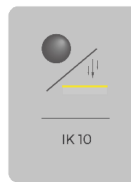
Illuminance curve



Note: The above data is based on 24V, 10W/M, single colour with 4000k colour temperature. If you need IES files for other types, please contact our sales department.



Length Standard



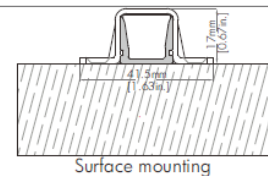
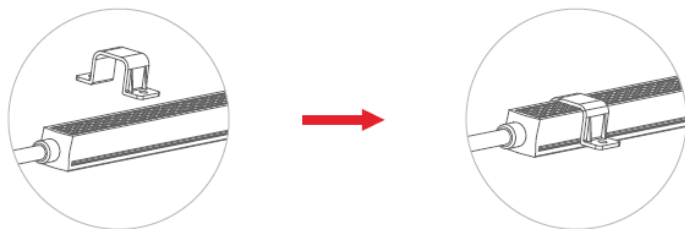
CCT(K)	RA	Voltage	Power (W)	Lumen (LM/M-LM/FT)	Efficiency (LM/W)	Unit Length (mm / inch)	Max. Run Length (M / ft)	CC/ CV
2700K ± 150	≥90	DC24V	14	162 / 49	12	FreeCut*	5M / 16.4ft	CV
3000K ± 150	≥90	DC24V	14	162 / 49	12	FreeCut*	5M / 16.4ft	CV
4000K ± 300	≥90	DC24V	14	162 / 49	12	FreeCut*	5M / 16.4ft	CV
5000K ± 400	≥90	DC24V	14	162 / 49	12	FreeCut*	5M / 16.4ft	CV
6500K ± 400	≥90	DC24V	14	162 / 49	12	FreeCut*	5M / 16.4ft	CV

* Free cutting LED strip can be customized to any length

- The maximum series length refers to the maximum length of the light strip with single-end power supply in series under the standard 30CM cable.
- For the load capacity of the solder free end cap, please refer to <The Maximum Load Capacity of Power Cables>
- The given color temperature is the temperature of finished product.
- The given data are typical values due to the tolerances of the production process and the electrical components, values for light output and electrical power can vary up to 10%.
- All products can be dimmed; the dimmer's voltage should conform to the rated voltage of the led light.
- The output frequency of the dimmer of the constant-current led light should be less than 2K Hz, and the output PWM can control the led light

Installation

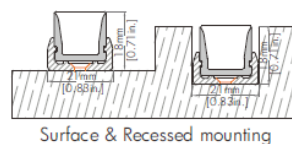
Fixed by clip and screw



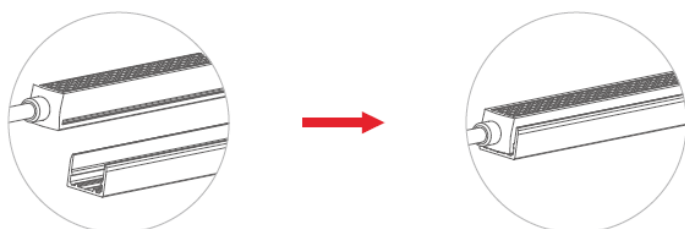
Fixed by bracket and screw



Space & Groove are shown as below



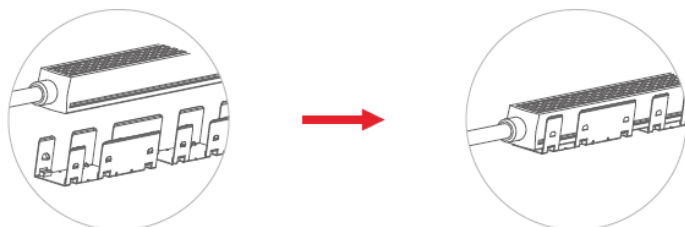
Fixed by aluminum profile and screw



Space & Groove are shown as below



Fixed by bendable bracket and screw



Space & Groove are shown as below

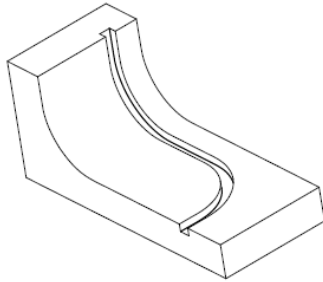


Note: Silver color is standard; white color is optional and shipped in 1M[3.94ft.] per piece.

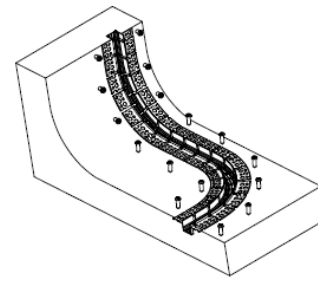
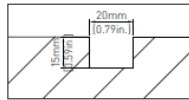
Note: It's also support surface & recessed mounting by gluing process.

Installation

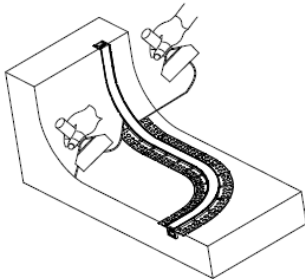
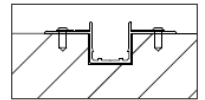
Fixed by dual-bend plaster-in aluminum profile and screw
(The bending method of the profile during use, should be determined based on the bending method of the neon strip.)



Make a groove with the size of W20*H15mm[W0.79*H0.59in.]
on the mounting surface.

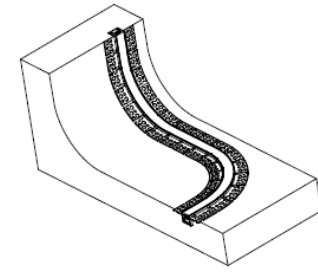
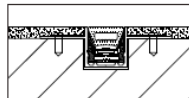


Fix the dual-bend plaster-in aluminum profile to the groove by screw.

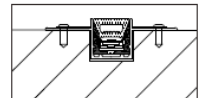


In addition to the neon strip, the areas on both sides of the illuminated
surface should be plastered and dried before completion.

Attention: Aluminum profile can not be used in swimming pool.

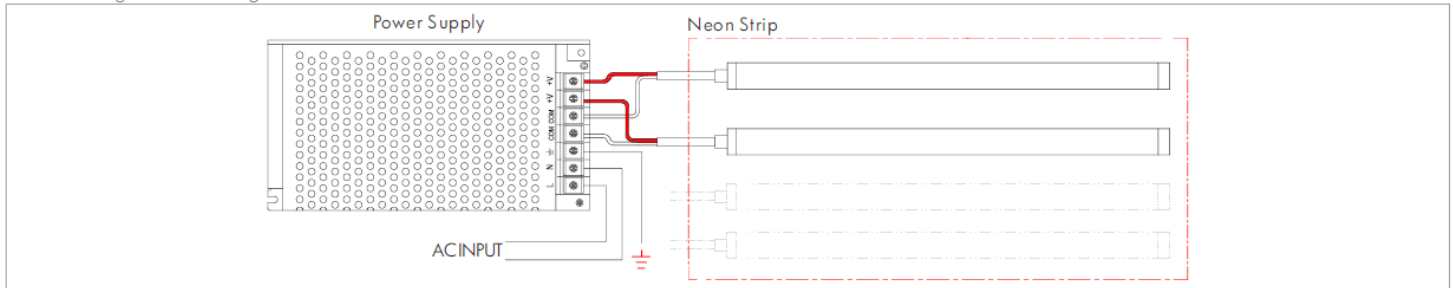


Press the neon strip into the dual-bend plaster-in aluminum profile.



Connection

Non-Dimming Status for Single Color



Dimming Status for Single Color

