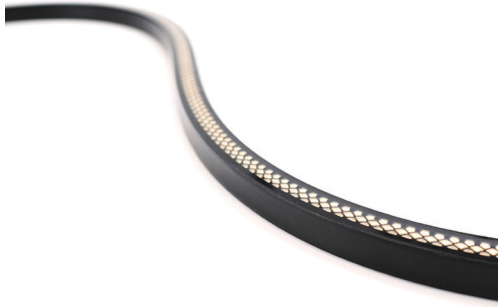




Silicone neon strip

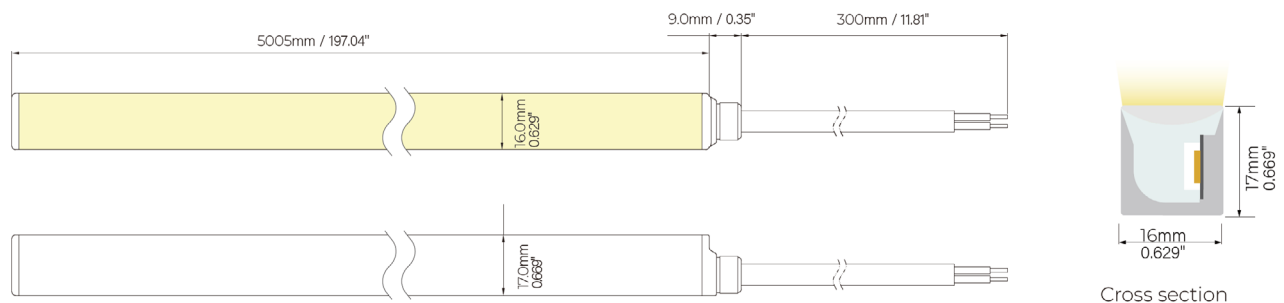
VIVA Silicone HEX Enclosed Side

Product specification



- Low glare value, UGR<19, reduces eye fatigue and discomfort, suitable for various lighting environments, especially in bright light or situations where light interference needs to be reduced, such as high end applications;
- Featuring a unique black exterior design, simple yet sophisticated, it can perfectly blend into the usage environment, achieving the effect of “seeing light but not seeing light”. It emits soft and uniform light without any spots, suitable for various lighting environments;
- Environmentally friendly silicone material, integrated extrusion production process, IP67 protection level, salt solution resistance, acid and alkali corrosion resistance, UV resistance;

Dimensions Structure



Electrical Parameters

Voltage	LED PIN Temperature	Storage Temperature	Ambient Temperature	RA
DC24V	Max. 65°C / 149°F	-25°C ~ 60°C -13°F ~ 140°F	Min. -25°C / -13°F Max(Table below)	≥ 90

Specifications

Power(w/m - w/ft)	Efficacy(lm/w)@4000K	Max Ambient Temperature
10 w/m - 3.048 w/ft	2.6lm/w	45°C / 113°F

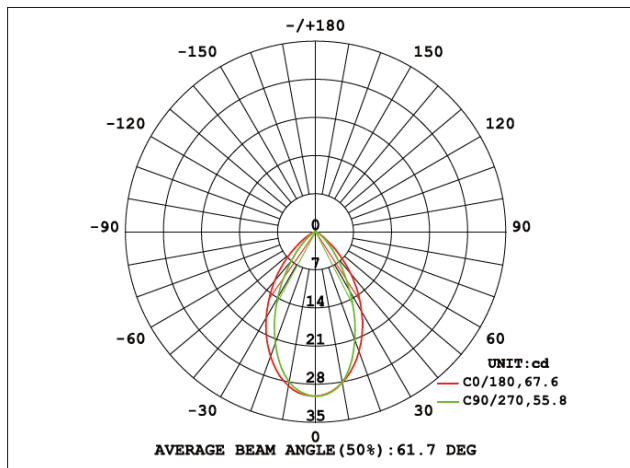
Due to the tolerance of the production and electrical components, output value and electrical power can vary up to 10%

Length Standard

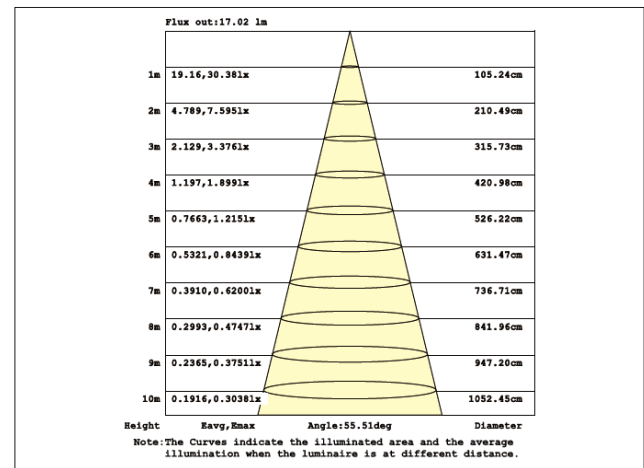
Length Range (M / ft)	Integrated end cap	Tolerance
0M< Strip(L) \leq 5M / 16.4ft	L+6mm / L + 0.236"	$\pm 7\text{mm} / \pm 0.275"$
5M< Strip(L) \leq 10M / 32.8ft	L+6mm / L + 0.236"	$\pm 10\text{mm} / \pm 0.393"$

Bend horizontal only

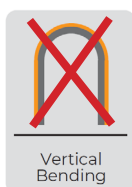
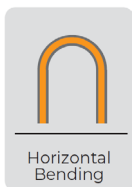
Light Distribution Curve



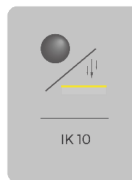
Illuminance curve



Note: The above data is based on 24V, 10W/M, single colour with 4000k colour temperature. If you need IES files for other types. Please contact our sales department.



Length Standard

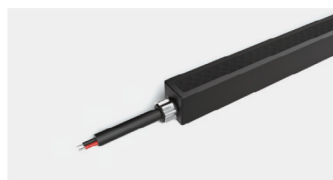
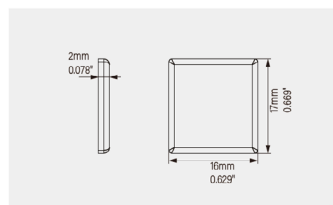
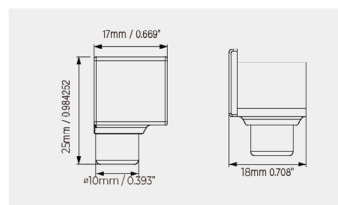
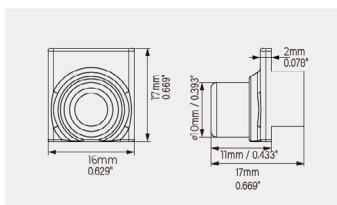


CCT(K)	RA	Voltage	Power (W)	Lumen (LM/M-LM/FT)	Efficiency (LM/W)	Unit Length (mm / inch)	Max. Run Length (M / ft)	CC/ CV
2700K ± 150	≥90	DC24V	10	26 / 7.92	2.6	50 / 1,96	5M / 16.4ft	CV
3000K ± 150	≥90	DC24V	10	26 / 7.92	2.6	50 / 1,96	5M / 16.4ft	CV
4000K ± 300	≥90	DC24V	10	26 / 7.92	2.6	50 / 1,96	5M / 16.4ft	CV
5000K ± 400	≥90	DC24V	10	27 / 8.22	2.7	50 / 1,96	5M / 16.4ft	CV
6500K ± 400	≥90	DC24V	10	26 / 7.92	2.6	50 / 1,96	5M / 16.4ft	CV
AMBER	--	DC24V	10	15.7 / 3.23	1.5	50 / 1,96	5M / 16.4ft	CV

- The maximum series length refers to the maximum length of the light strip with single-end power supply in series under the standard 30CM cable.
- For the load capacity of the solder free end cap, please refer to <The Maximum Load Capacity of Power Cables>
- The given color temperature is the temperature of finished product.
- The given data are typical values due to the tolerances of the production process and the electrical components, values for light output and electrical power can vary up to 10%.
- All products can be dimmed; the dimmer's voltage should conform to the rated voltage of the led light.
- The output frequency of the dimmer of the constant-current led light should be less than 2K Hz, and the output PWM can control the led light

Cable entry

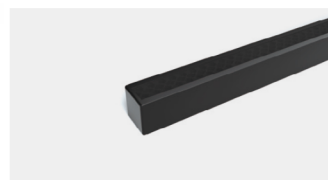
Integral end cap (IP67)



Front Cable Entry





Bottom Cable Entry



Closed End cap

Cable

Cable Type	Schematic Diagram	Specification	Core	Wiring
Silicone Cable		OD: 5.0mm / Inner core: 20AWG	● ●	Red V+, Black V-
Waterproof Connector with Silicone Cable		OD: 5.0mm / Inner Core: 20AWG M12 Male / Female connector	● ●	Red V+, Black V-

Cable's Maximum load capacity

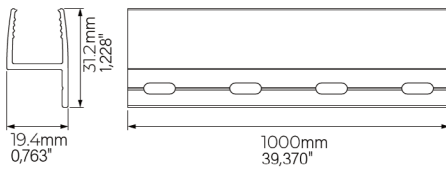
Cable with single-ended power supply, its maximum load power is as follows:

Color	Maximum load current (A)	DC24V Maximum load Power (W)	DC12V Maximum load Power (W)
Single color	4.2	100	50
CCT Tunable	3.5	84	42
RGB	3	72	36
RGBW	3	72	36
Magic	3	72	36

When one end of the single color led neon goes out, the power exceeds the wattage listed in the table, it is recommended to use integrated or silicone end cap

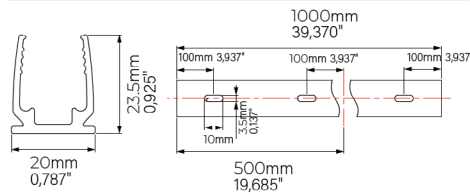
Mounting Way (Unit: mm and Inch")

PC Profile side mount



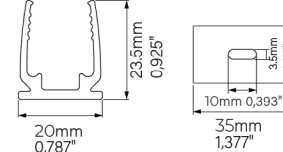
Length: 1000X19.4X31.2mm
Length: 39,370"X0.763"X1.228"
Accessories:
Screw M3X16 (SS316)

PC Profile straight mount



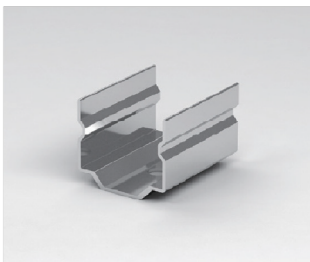
Length: 1000X20X23.5mm
Length: 39,370"X0.787"X0.925"
Accessories:
Screw M3X16 (SS316)

PC Mounting clip



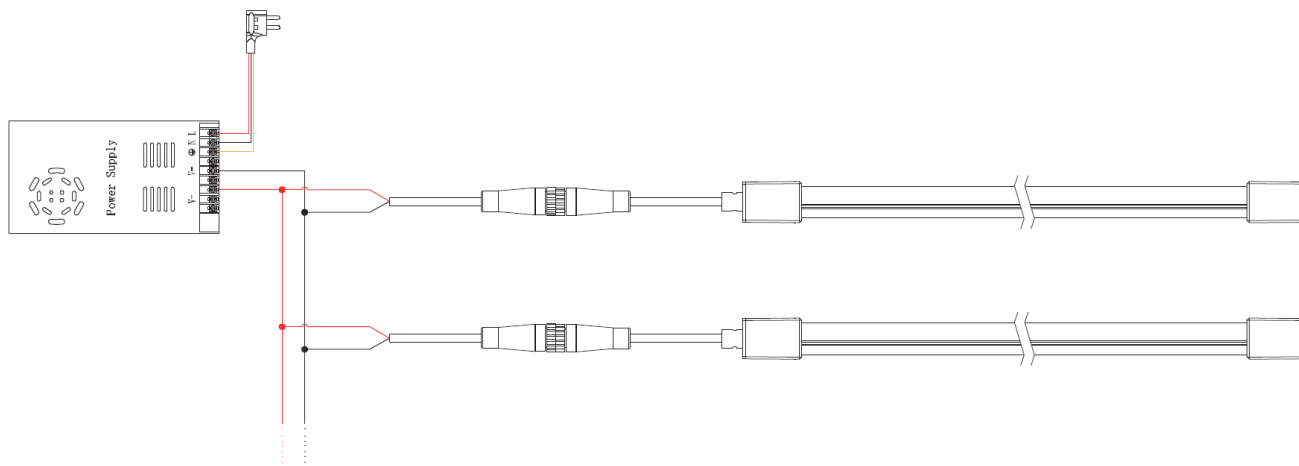
Length: 35X20X23.5mm
Length: 1,377"X0.787"X0.925"
Accessories:
Screw M3X16 (SS316)

316 Stainless steel Mounting clip

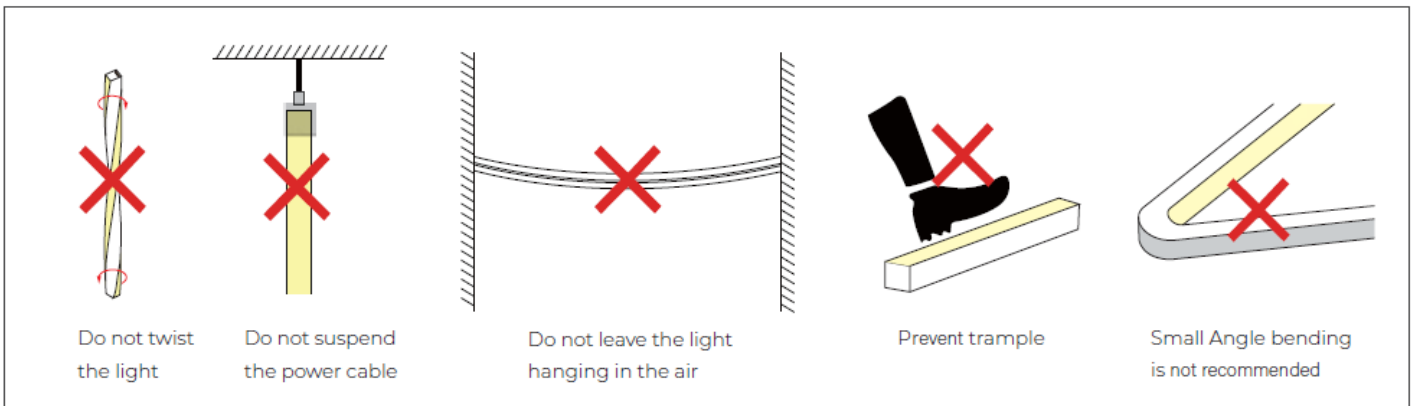
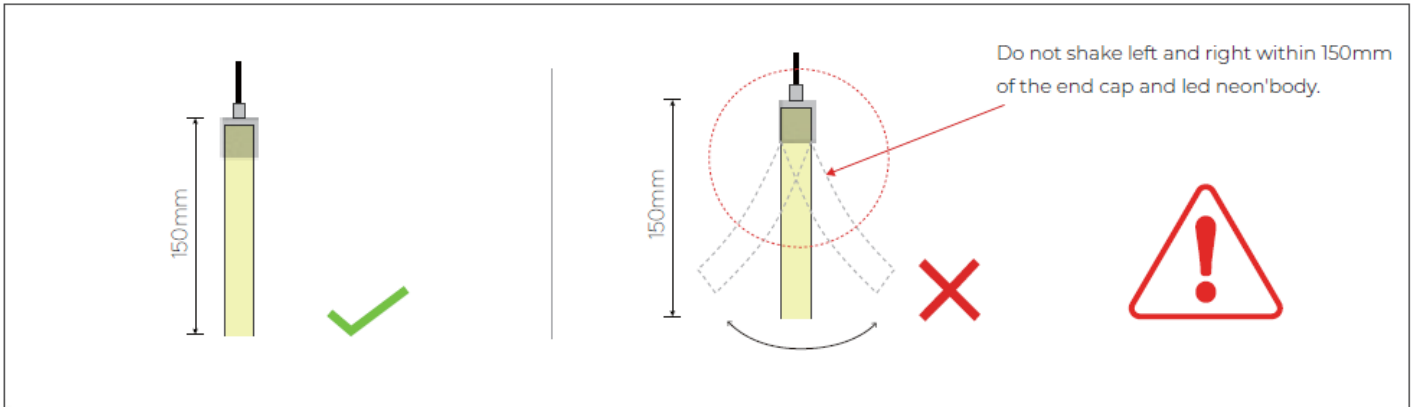


Dimension: 35x18X17mm
Dimension: 1.377"X 0.708"X0.669"
Accessories:
Screw M3x15mm (SS316)

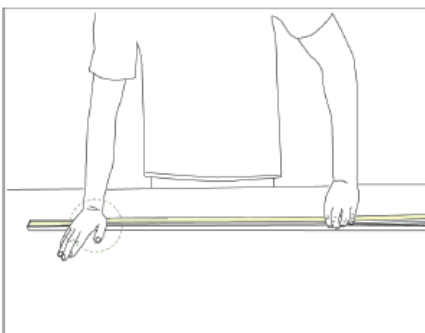
Single Color Connection Diagram



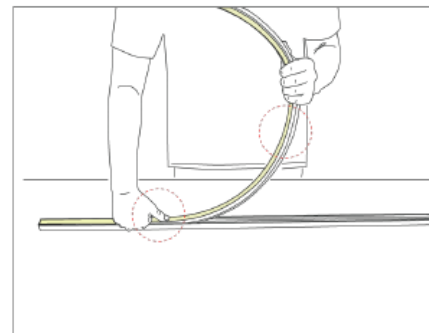
Installation Precautions



Install in the channel



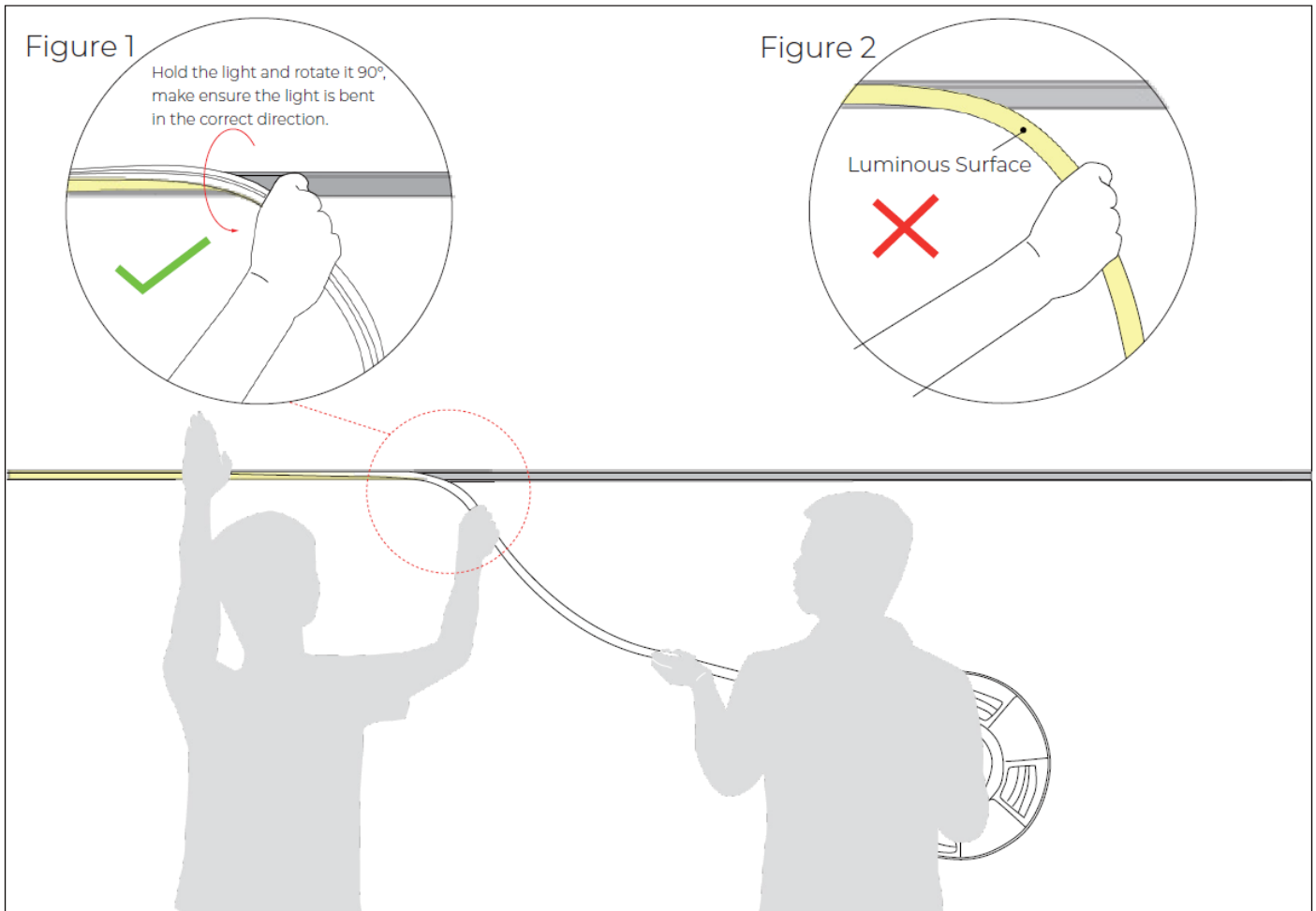
- Please press the led strip with your palm to slowly insert the led strip into the groove, and gently straighten the led strip above the groove with your right hand.
- Try to keep the led strip in a flat state during the installation process.



- Do not press the led strip with a single finger, it is easy to damage the internal parts of the led strip. The bent arc of the led strip should not be too large during installation.

Installation Precautions -- Side Mounted

(If the length of the light is more than 2 meters, two persons must work together to install it.)

**1.Installer:**

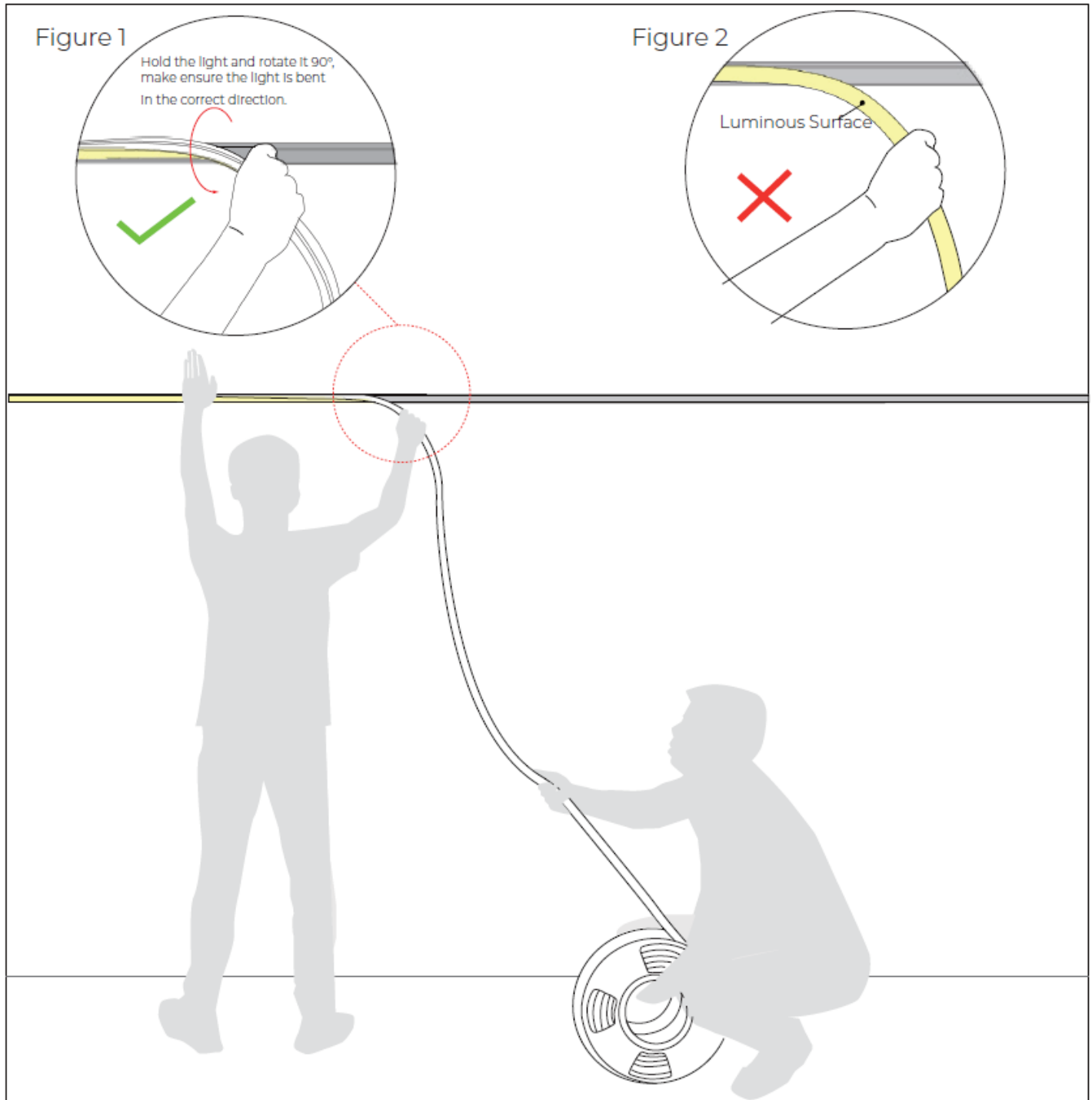
- Press the light with the palm of the left hand to slowly load it into the slot. Straighten the light with right hand, hold it and rotate it 90 ° to droop it in the direction of your hand. See Figure 1.
- Do not bend the luminous surface to the side. See Figure 2.

2.Assistant:

- Cooperate with the installer to lift the reel of the light, and then slowly deliver the light to installer. Do not pull or twist the light during the installation.

Installation Precautions -- Side Mounted

(If the length of the light is more than 5 meters, two persons must work together to install it.)

**1.Installer:**

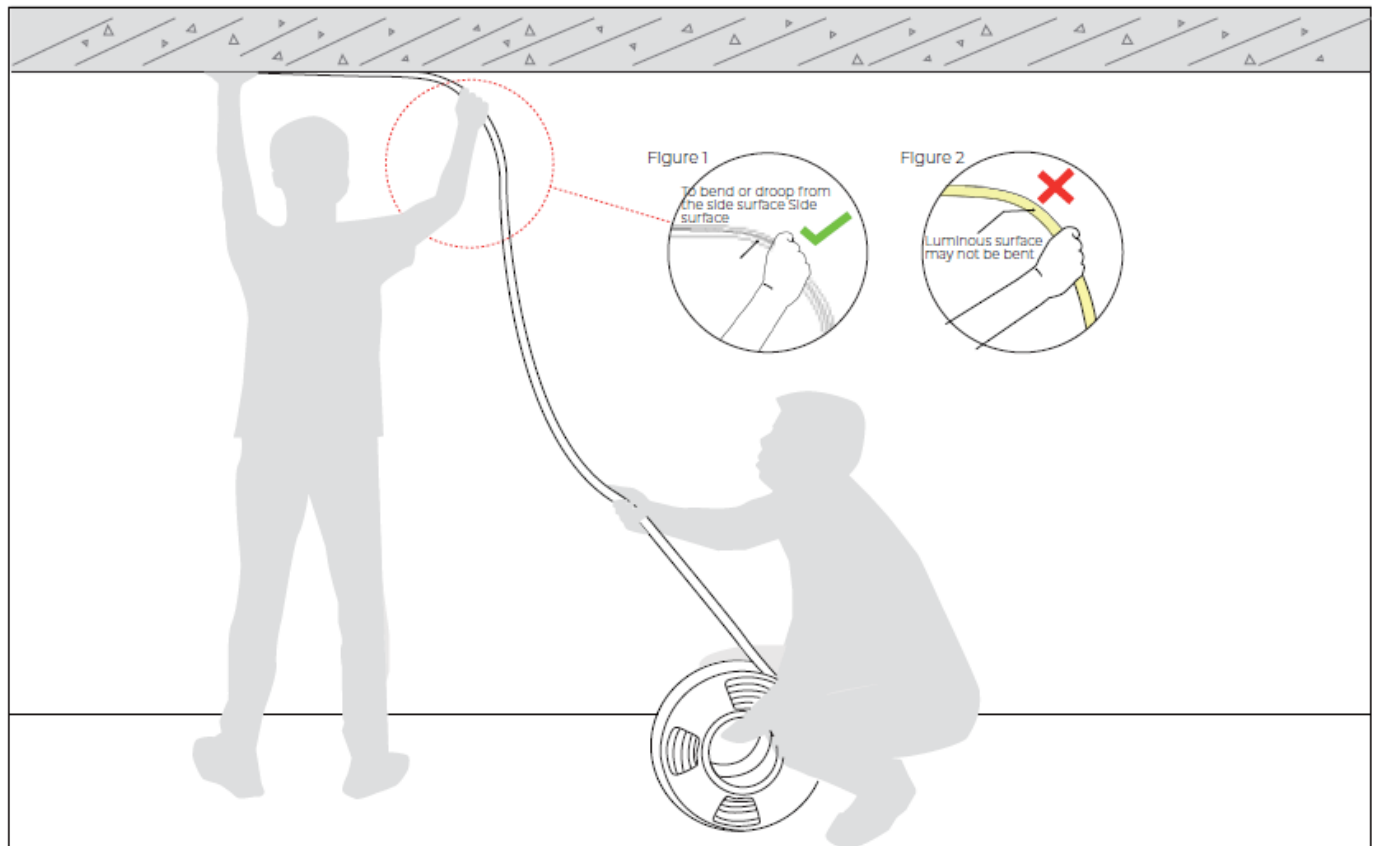
- Press the light with the palm of the left hand to slowly load it into the slot. Straighten the light with right hand, hold it and rotate it 90 ° to droop it in the direction of your hand. See Figure 1.
- Do not bend the luminous surface to the side. See Figure 2.

2.Assistant:

- Cooperate with the installer to slowly deliver the light to installer. Do not pull or twist the light during the installation.

Installation Precautions -- Top Mounted

(If the length of the light is more than 2 meters, two persons must work together to install it.)

**1.Installer:**

- Press the light with the palm of the left hand to slowly load it into the slot. Straighten the light with your right hand so that it droop naturally. See Figure 1.
- Luminous surface may not be bent. See Figure 2.

2.Assistant:

- Cooperate with the installer to slowly deliver the light to installer. Do not pull or twist the light during the installation.

Notes

The selection of the cable specification at the output end of the power supply, it depends on the total current of the load and the length of the cable. It is recommended to select according to the following table:

Specifications of the Cable

Current of the light	L=1M	L=2M	L=4M	L=6M	L=8M	L=10M	L=12M	L=14M	L=16M
1A	AWG26	AWG23	AWG21	AWG18	AWG18	AWG17	AWG16	AWG15	AWG15
2A	AWG23	AWG21	AWG18	AWG16	AWG15	AWG14	AWG13	AWG12	AWG12
3A	AWG22	AWG18	AWG16	AWG14	AWG13	AWG12	AWG11	AWG11	AWG10
4A	AWG21	AWG18	AWG15	AWG13	AWG12	AWG11	AWG10	AWG9	AWG9
5A	AWG20	AWG17	AWG14	AWG12	AWG11	AWG10	AWG9	AWG9	AWG8
6A	AWG18	AWG16	AWG13	AWG11	AWG10	AWG9	AWG8	AWG8	AWG7
7A	AWG18	AWG15	AWG12	AWG11	AWG9	AWG8	AWG8	AWG7	AWG6
8A	AWG17	AWG15	AWG12	AWG10	AWG9	AWG8	AWG7	AWG7	AWG6
9A	AWG17	AWG14	AWG11	AWG10	AWG8	AWG7	AWG7	AWG6	AWG5
10A	AWG16	AWG14	AWG11	AWG9	AWG8	AWG7	AWG6	AWG6	AWG5

- The unused light should be sealed with the packaging bag to avoid prolonged exposure.
- Please use DC24V isolated constant voltage power supply with ripple voltage less than 5%. Using other types of power supply may damage the light or cause other safety risks.
- In practical application, 20% allowance should be reserved for power supply to ensure the stability of power supply.
- It is recommended that professionals connect the power supply. Do not connect the power supply with live power to avoid electric shock.
- Please confirm whether the voltage of the power supply is consistent with the voltage of the light; Pay attention to the positive and negative poles of the power cord, do not connect wrong, so as not to cause product damage;
- When multiple power supplies are used, ensure that the positive poles of the power supply are not connected in parallel. Otherwise, the power supply system may be unstable or damaged after long-term operation.
- If the actual application length exceeds the specified length, it will lead to overload, heating and uneven brightness of the light.
- During installation, please do not scratch, twist, or bend the light irregularly. Otherwise, the light may be damaged beyond repair.
- To ensure the life and reliability of the light, please do not over bend the light, which will damage the product itself.
- To protect your eyes, please avoid staring at the glowing surface of the light for a long time.
- Non-professionals are forbidden to install, disassemble and maintain the product.
- Do not use any acid or alkaline adhesive to fix the light (including but not limited to glass glue, etc.)
- IP67 products are not suitable for long-term immersion in water; IP68 products are only customized by the factory. After cutting and processing by users themselves, there is a risk that IP68 protection level cannot be reached
- Because of the difference in structure, even if the same color temperature value, different sizes of light will look slightly different colors. Please confirm it before use.