

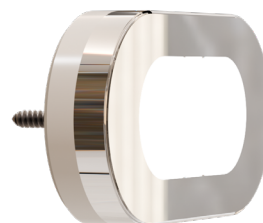
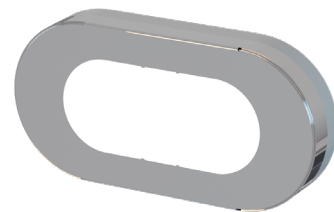
OVERVIEW

The DR10 is a purpose-built LED oval marker and step light designed for subtle, low-level illumination in architectural environments. With an IP65 rating, it delivers a soft, understated glow that enhances ambiance without glare, making it ideal for pathways, staircases, corridors, and accent lighting. Available in White, Blue, and a dimmed soft-white option, this fixture is engineered for durability with strong resistance to dust and moisture, offering both safety and visual elegance in indoor and outdoor applications.

FEATURES

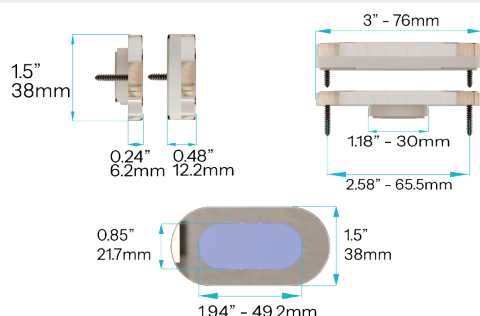
- STAINLESS HARDWARE
- SPECIFIC DESIGN FOR EYE COMFORT
- HARD PLASTIC BODY
- LONG SERVICE LIFE
- LOW HEAT
- DESIGNED FOR OUTDOOR AND INDOOR USE
- OPTIONS IN DIFFERENT COLORS
- TESTED UNDER ASTM B119-19 (salt spray test)
- MOUNTING OPTIONS RECESSED OR FLUSH MOUNT

SERIES	DR10	
FINISH	316 STAINLESS STEEL with CHROME or POWDER COATED WHITE FINISH	
LIGHT	3000K White + Dimming capable 3 Wire	Blue + Dimming capable 3 Wire
BRIGHTNESS	15 LUMENS	5 LUMENS
IP RATING	IP65	
VOLTAGE	10 - 30VDC	
WATTS	0.2 W	0.035 W
LIFESPAN	50,000HRS	
WARRANTY	5 YEARS	



DR10 OVAL MARKER

DR10 OVAL MARKER SIZE



AC/DC Driver for DR10