

OVERVIEW

The DR Compact series delivers powerful, efficient LED downlighting designed for modern homes, offices, retail, and hospitality environments. With multiple size and output configurations, it's easy to achieve the right illumination for hallways, ceilings, workspaces, and feature areas. Installation is seamless thanks to a simple 2-wire setup, and the optional gimbal trim allows precise directional aiming to highlight architectural details, artwork, or task areas. The DR Compact series provides a clean, contemporary upgrade to LED lighting technology — no major electrical overhaul required — making it an ideal solution for renovations, retrofits, or new-build installations.

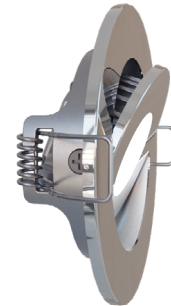
FEATURES

- STAINLESS HARDWARE
- DIFFUSED GLASS LENS
- CREE LED
- PLATED ALUMINUM BODY
- SPRING MOUNTING
- LONG SERVICE LIFE
- ENERGY EFFICIENT
- LOW HEAT
- DESIGNED FOR OUTDOOR AND INDOOR USE
- WIDE INPUT VOLTAGE
- 3000K / 4000K WHITE - 2 WIRE INSTALLATION
- TESTED UNDER ASTM B119-19 (salt spray test)

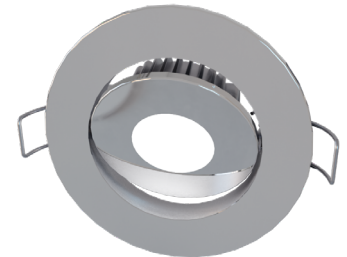
SERIES	DR15S	DR25S
FINISH	POLISHED 316 SS IN CHROME OR POWDER COATED WHITE	
LIGHT	2 WIRE 3000K WARM WHITE or 4000K NEUTRAL WHITE	
BRIGHTNESS	150 LUMENS	300 LUMENS
IP RATING	IP65	
VOLTAGE	10 - 30VDC	
WATTS	2W	4W
LIFESPAN	50,000HRS	
WARRANTY	5 YEARS	



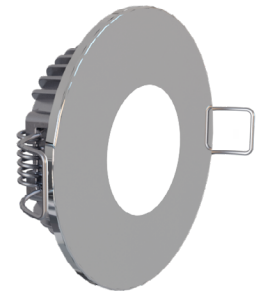
DR15S Compact



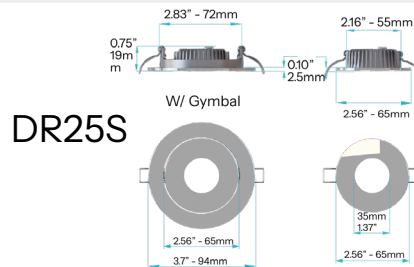
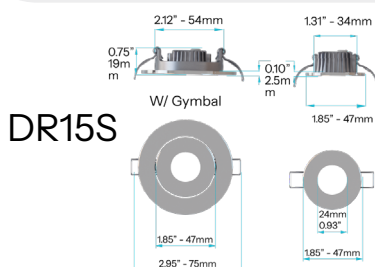
DR15S Compact with Gimbal



DR15S Compact with Gimbal



DR25S Compact



AC/DC Driver for DR Compact Series