

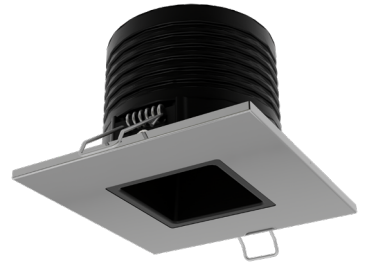
OVERVIEW

This IP65-rated recessed spotlight is a durable and efficient lighting solution for both indoor and outdoor architectural applications. Constructed with 316 stainless steel for lasting protection against moisture and debris, it performs reliably even in demanding environments. Powered by a 6W COB LED with excellent color rendering (RA 90), it provides bright, high-quality illumination. With selectable color temperatures of 3000K, 4000K, or 5000K, this fixture offers versatile lighting options for pathways, soffits, exterior walls, entryways, and interior accent lighting.

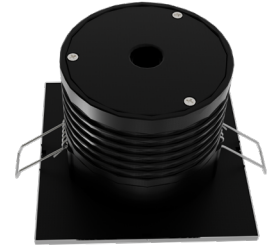
FEATURES

- STAINLESS HARDWARE
- SUPPORTS PWM DIMMING
- COB LED
- PLATED ALUMINUM BODY
- SPRING MOUNTING
- INCLUDED HONEYCOMB DIFUSSER TO IMPROVE ANTI-GLARE
- LONG SERVICE LIFE
- ENERGY EFFICIENT
- LOW HEAT
- DESIGNED FOR OUTDOOR OR INDOOR USE
- 3000K / 4000K / 5000K WHITE - 3 WIRE INSTALLATION
- TESTED UNDER ASTM B119-19 (salt spray test)

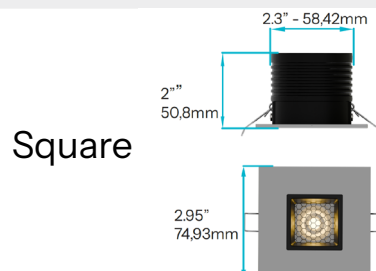
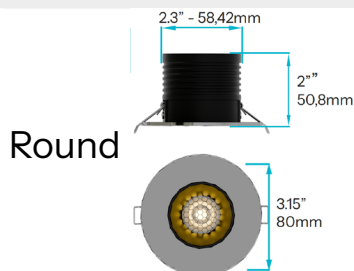
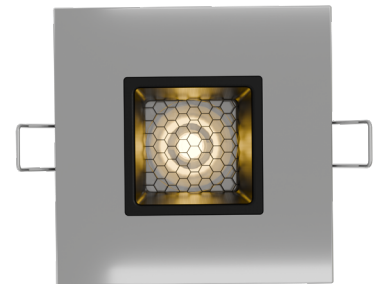
SERIES	DR30 and DR35	
FINISH	POLISHED 316 SS IN CHROME, POLISHED OR POWDER COATED WHITE OR BLACK	
LIGHT	3 WIRE, 3000K WARM WHITE or 4000K NEUTRAL WHITE or 5000K COOL WHITE	
BRIGHTNESS	300 LUMENS W/ HONEYCOMB	400 LUMENS W/O HONEYCOMB
IP RATING	IP65	
VOLTAGE	22 - 28VDC	
WATTS	6W	
LIFESPAN	50,000HRS	
WARRANTY	5 YEARS	



Recessed Spotlight



Recessed Spotlight

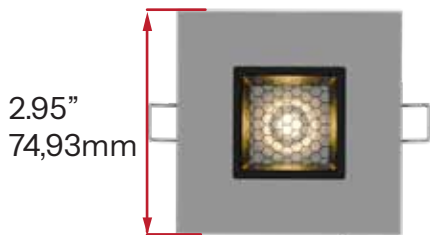
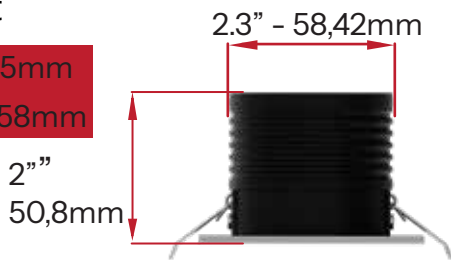


AC/DC Driver for DR Series

Square

Cutout

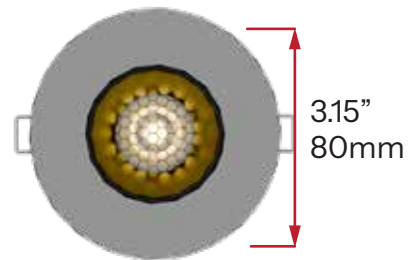
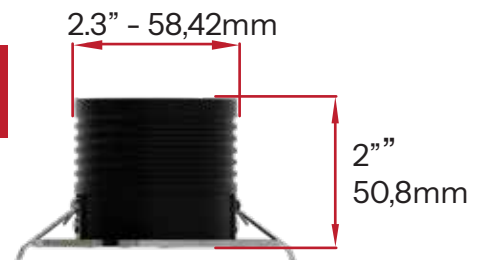
2.5" - 63.5mm
2.7" - 68.58mm



Round

Cutout

2.5" - 63.5mm
2.7" - 68.58mm



For Installation without the honeycomb difusser

Using 2 fingers pull gently upwards on the cone



Extract the included honeycomb difusser and reassamble the light

For new installation cut out a hole following the above numbers marked in blue

Installation

Connect the wires

Black = Negative
Red = 5000K White light
Blue = 4000K White light
White = 3000K White light
22-28V DC Voltage Input only
Connect the wires according to the diagram on the left and desired output by connecting negative to black and the positive to either white, red or blue depending on desired color temperature, connect only one of this wires to positive at a time. Supports PWM Dimming.

Pull back the springs firmly



With a firm grip on the springs insert the fixture into the opening and let go slowly

